



## Power Genius XL™ Release Notes – Version 3.8.9

December 4, 2024

This version of the Power Genius XL firmware (3.8.9) provides bug fixes to enhance the functionality and user experience of all Power Genius XL (PGXL™) amplifiers. FlexRadio recommends that users update their PGXL firmware to the latest version to ensure optimal performance.

### Power Genius Firmware Updates

No new features are included in the Power Genius XL v3.8.9 release.

### Power Genius Bug Fixes

**Resolved "Load Version" Failures:** The issue where the amplifier failed to load the correct version has been addressed. In addition, a factory reset ensures proper operation when the failure occurs.

**Improved SWR Meter Accuracy:** Corrected an issue where the "Amp SWR" meter in SmartSDR did not accurately reflect the measured Standing Wave Ratio (SWR).

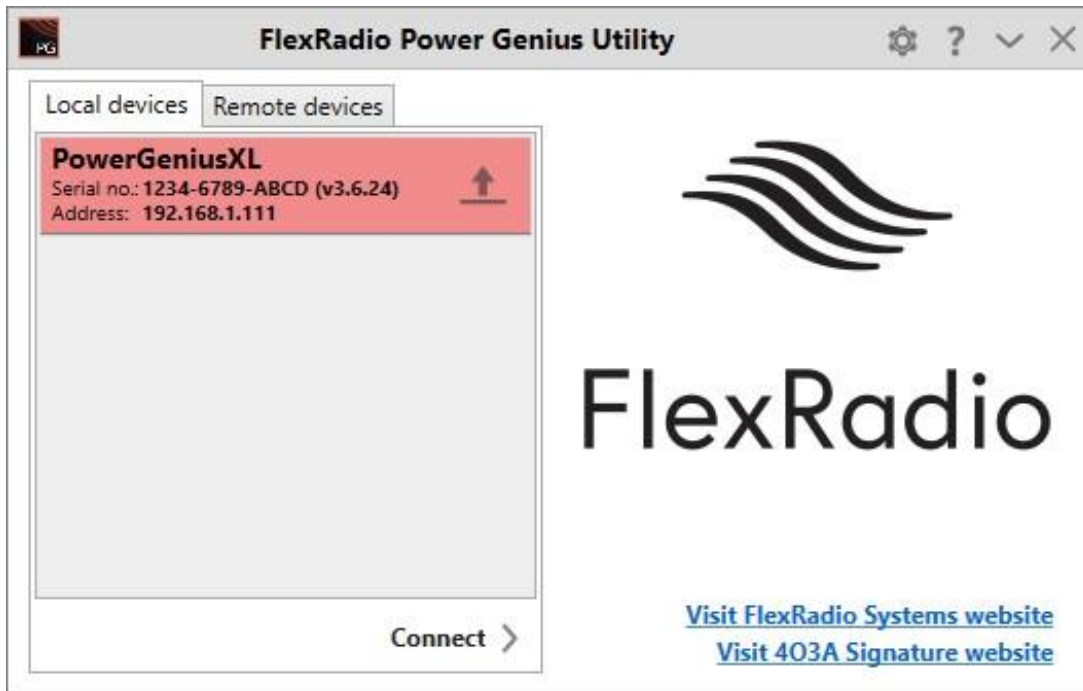
### Significant Operational Differences

**NOTE:** The format of data stored in the PGXL's internal database has been modified to support new features and capabilities. The new database schema is no longer backward compatible with older versions of the PGXL firmware.

**If you are currently running a version of the PGXL firmware that is v3.6 or below, you must first upgrade the PGXL firmware versions 3.7.28 or v3.7.32 before upgrading to version 3.8.4 or greater.** Running PGXL v3.7.28 and v3.7.32 versions performs a database schema conversion that makes it compatible with future versions of the PGXL firmware.

## Power Genius Windows Utility (version 3.8.9)

**Unified Windows Utility and PGXL Firmware Releases** – You must install the Power Genius Utility v3.8.9 to upgrade the firmware in the Power Genius XL amplifier. After starting the updated PGXL Utility, if the program finds that the firmware installed in the amplifier is out of date a screen like the following will be shown. When selected, the firmware upgrade dialog box is displayed to start the firmware update.



**Caution: Never run earlier versions of the Power Genius Utility with new Power Genius XL firmware.** Before installing the latest release of the Power Genius Utility, you should remove any earlier versions of the Power Genius Utility from all PCs on your network. This includes version v2.2.10 and below. Connecting an older version of the Power Genius Utility to a Power Genius XL amplifier can result in unexpected and unreliable behavior.

Starting with the Power Genius Utility v3.5.32 and greater, the newer version of the Power Genius Utility installer will automatically uninstall the earlier version of the Power Genius Utility.

## Known Issues

1. Running an earlier version of the Power Genius Utility with a later version of the Power Genius XL firmware can result in unexpected and unreliable behavior. If this occurs, please shut down the older Power Genius Utility, remove it from your PC, and then power off the Power Genius XL amplifier. After the Power Genius XL has shut down, restart it and connect with the correct version of the Power Genius Utility.
2. The Power Genius Chart feature is not 100% functional. The Power Genius Utility Chart feature has known issues and is not 100% functional in this release of the Power Genius Utility.

# Power Genius XL Documentation Available on [www.flexradio.com](http://www.flexradio.com)

The most current documentation and quick start guides for the Power Genius XL are available as a convenient download from the FlexRadio website.

## Obtaining Technical Support

If you encounter any issues with your Power Genius XL, please use our online [Community](#) to search for information about SmartSDR and the FLEX-6000. If you need assistance using the Community, please refer to the [Community Message Board](#) for additional information.

If you are unable to find an existing answer to your issue via the Community, please contact FlexRadio Technical Support by opening a [HelpDesk support ticket](#) online.

For details on how to submit a HelpDesk support ticket, please refer to the HelpDesk article How to Submit a [Request for Technical Support](#).

**Hours of Operation:** Our Technical Support engineers are available Monday-Friday from 7:00 AM-4:00 PM Central Time. If you open a HelpDesk ticket after business hours, on a holiday, or weekend, we will respond to your request for assistance during regular business hours in the order your HelpDesk ticket was received.

## Copyrights and Trademarks

© 2005-2024 FlexRadio. All rights reserved.

FlexRadio is a registered trademark of Bronze Bear Communications, Inc. DBA FlexRadio.

FLEX-6300, FLEX-6400, FLEX-6400M, FLEX-6600, FLEX-6600M, FLEX-6500, FLEX-6700, FLEX-6700R, FLEX-8400, FLEX-8400M, FLEX-8600, FLEX-8600M, Maestro, FlexControl, Power Genius XL, PGXL, Tuner Genius, TGXL, SmartSDR, SmartSDR for Windows, SmartSDR for iOS, SmartSDR for MacOS, SmartSDR CAT, SmartLink, DAX, TNF, WNB, multiFLEX, SmartControl, the SmartSDR "spectrum" (logo) and the FlexRadio Systems "wave" (logo) are trademarks of FlexRadio.

FlexRadio  
4616 W. Howard Lane  
Suite 860  
Austin, TX USA 78728  
+1 (512) 535-4713  
[www.flexradio.com](http://www.flexradio.com)