



Station Genius v2

New Features

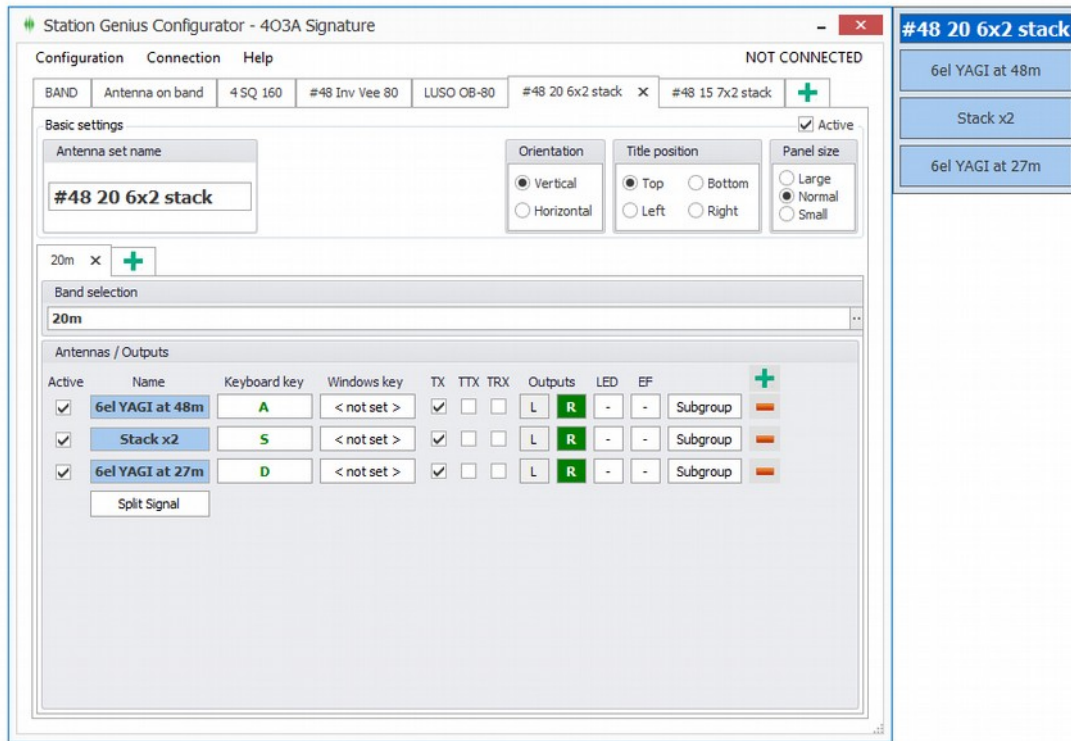
In September of 2016, 403A released new software for Station Genius. Both firmware and the Windows app are rewritten completely from scratch. We kept the same app design, trying to improve it.

This document covers differences and new features of the 2.0.0 firmware and Windows app.

New Features

1. More button types!.....	1
2. Output Module Redesign.....	2
3. Exclusive ID's.....	3
4. Subgroups.....	3
5. Split Signal Redesign.....	3

1. More button types!



In the 1.5.0 version you could configure your buttons to have different layouts when transmitting by marking them as PTT.

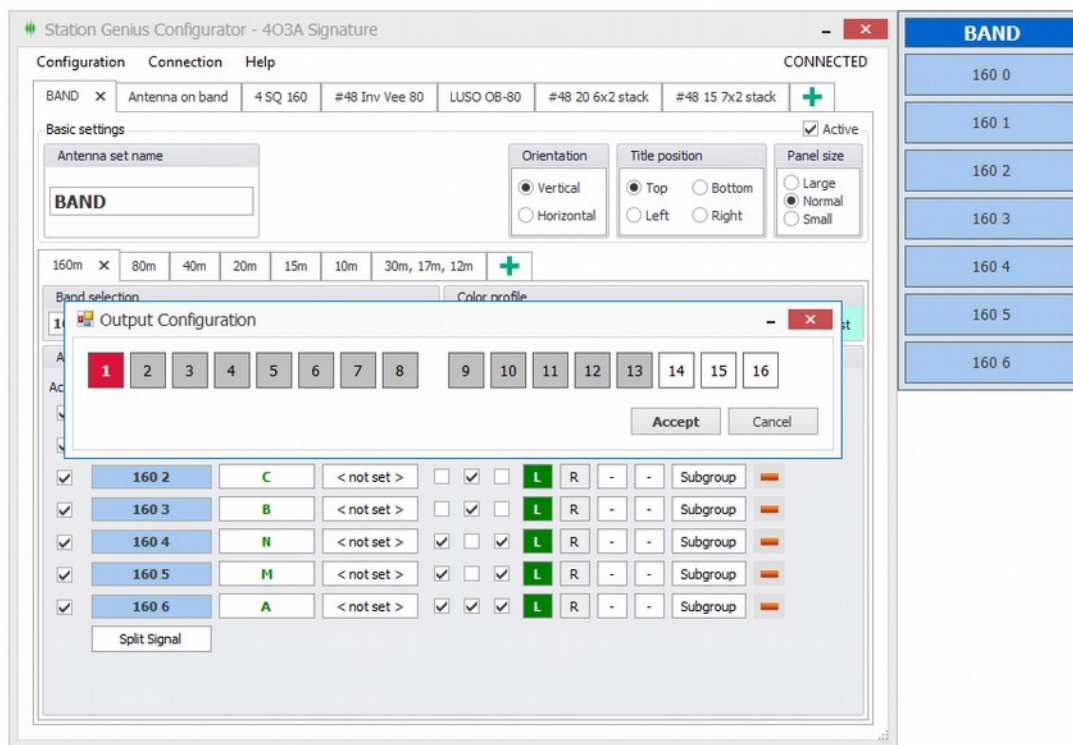
There are four possible states. They can be used in combination as well:

1. Everything unchecked. This sets an RX antenna. When using this antenna it will switch off all other antennas in the group. It will remain active when transmitting.
2. TX – Transmit antenna. This is what PTT antenna used to be in the 1.5.0.
3. TTX – Toggle Transmit antenna. Use when want more then one RX antenna. You can turn on multiple TTX antennas at the same time.
4. TRX – Toggle Receive antenna. Use when you want more then one TX antenna. You can turn on mutliple TRX antennas at the same time.

2. Output Module Redesign

L Local Outputs icon refers to your local Output Module. This module is controlled only by your SG unit and can't be controlled over the network.

It will be green if the button has set outputs, or white if none are set.



There are four possible output states:

1 This output is unused by any button.

1 This output is used by some other button. If you hold your mouse over this icon it will tell you the exact button using it.

1 This output is switched on when you click the button.

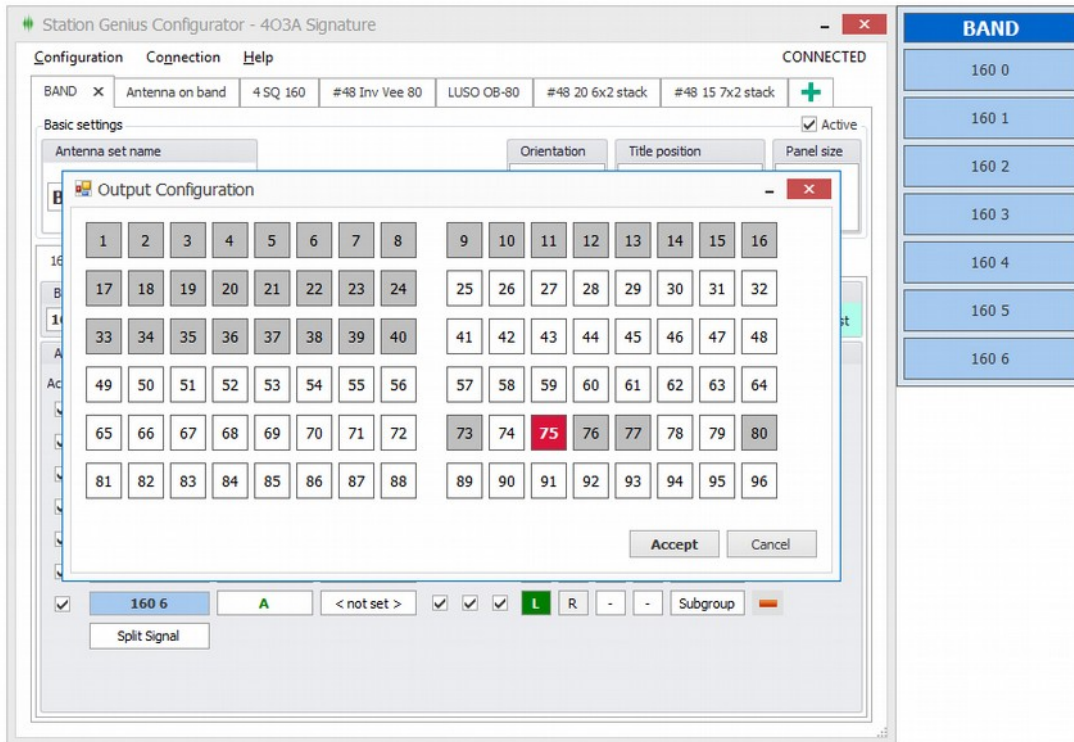
1

This output is explicitly switched off when you click the button. Used in special cases with some 4 Square configurations.

R

Remote Outputs icon refers to your remote Output Module. This module is controlled by your SG and over the network.

It will be green if the button has set outputs, or white if none are set.



Every row represents an OM. You can daisy chain up to 6 modules for a maximum of 96 outputs. Rows 1 through 16 represent the first OM. Rows 17 through 32 represent the first OM and so forth.

As with the local outputs, there are four possible states:

1

This output is unused by any button.

1

This output is used by some other button. If you hold your mouse over this icon it will tell you the exact button using it.

1

This output is switched on when you click the button.

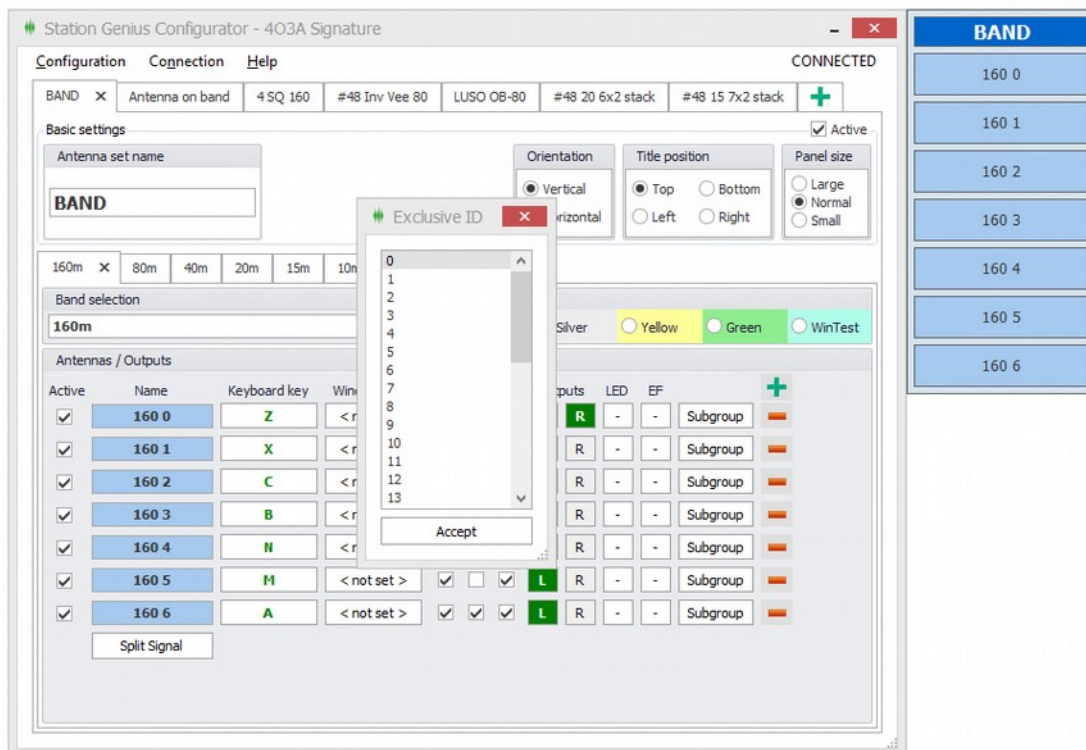
1

This output is explicitly switched off when you click the button. Used in special cases with some 4 Square configurations.

3. Exclusive ID's

The **EF** stands for Exclusive Flag. If you set this to a number greater than 0, then nobody else can use your antenna until you release PTT.

If set on an antenna, nobody else can use it until its released.



There's 32 exclusive ID's. This means you can have up to 32 exclusive buttons. They are not levels, meaning they are all weigh the same, as long as they are different then 0.

Set an ID to something different then 0 to make a button exclusive.

4. Subgroups

You can now make button sub groups for each button. Flags and settings are the same as when creating a regular button.

When you select that antenna the subgroup will show. First antenna in the subgroup will always be selected by default.

If you have only one subgroup on a band, it will always be visible.

5. Split Signal Redesign

Split signal is more configurable. You can select the exact LED you wish to turn on on the device. You can select the exact relay output as well, be it local or remote.

The screenshot displays the Station Genius Configurator interface for a 403A Signature device. The main window shows configuration options for various antennas and basic settings. A 'Split Signals' dialog box is open, allowing selection of local or remote outputs (M, X, Y) and an 'Accept' button. To the right, a 'BAND' selection panel lists frequencies from 160.0 to 160.6 MHz.

Active	Name	Keyboard key	LED	EF	Subgroup
<input checked="" type="checkbox"/>	160 0	Z	-	-	Subgroup
<input checked="" type="checkbox"/>	160 1	X	-	-	Subgroup
<input checked="" type="checkbox"/>	160 2	C	-	-	Subgroup
<input checked="" type="checkbox"/>	160 3	B	< not set >	<input type="checkbox"/>	Subgroup
<input checked="" type="checkbox"/>	160 4	N	< not set >	<input checked="" type="checkbox"/>	Subgroup
<input checked="" type="checkbox"/>	160 5	M	< not set >	<input checked="" type="checkbox"/>	Subgroup
<input checked="" type="checkbox"/>	160 6	A	< not set >	<input checked="" type="checkbox"/>	Subgroup