



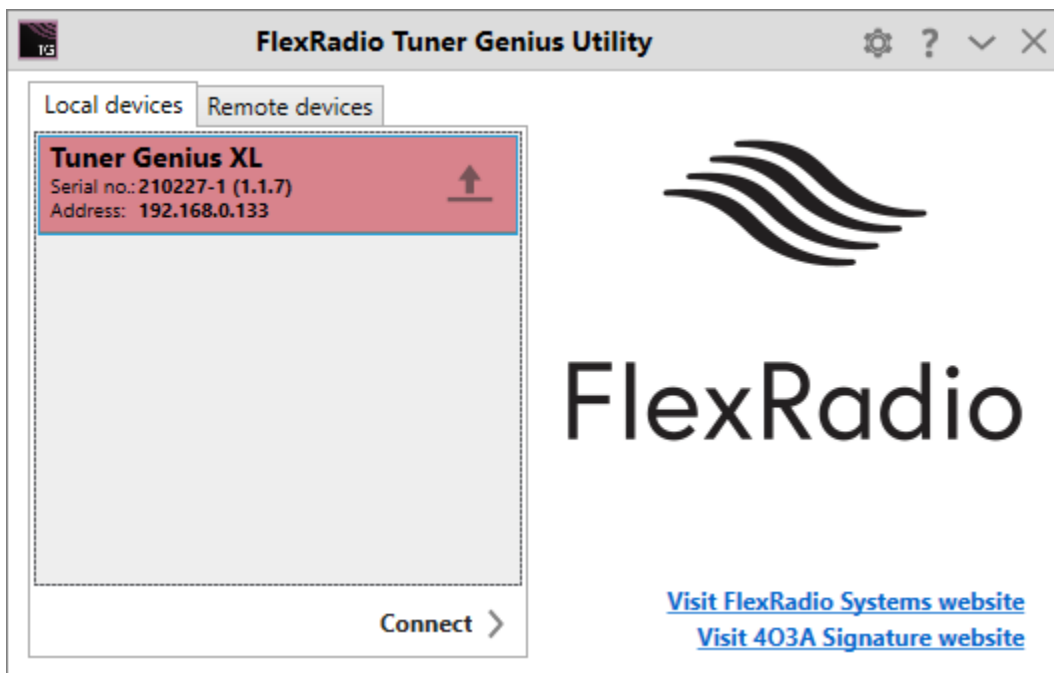
Tuner Genius™ XL Release Notes

January 10, 2023

Tuner Genius v1.1.16 is a general release for use with all Tuner Genius (TGXL™) antenna tuning units (ATUs).

FlexRadio Tuner Genius Windows Utility (version 1.1.16)

Unified Windows Utility and TGXL Firmware Releases – You must install the Tuner Genius Utility v1.1.16 to upgrade the firmware in the Tuner Genius ATU. When starting the updated TGXL Utility, once the ATU is shown in the Chooser, if the ATU's firmware is out of date, it will be displayed with a red background and a firmware upgrade icon (see below). When selected, the firmware upgrade dialog box is displayed to initiate the firmware update.



Caution: Never run previous versions of the Tuner Genius Utility with new Tuner Genius firmware. Before installing the latest release of the Tuner Genius Utility, you should remove any previous versions of the Tuner Genius Utility from all PCs on your network. Connecting an older version of the Tuner Genius Utility to a Tuner Genius ATU can result in unexpected and unreliable behavior.

Starting with the Tuner Genius Utility v1.1.1 and greater, the newer version of the Tuner Genius Utility installer will automatically uninstall the previous version of the Tuner Genius Utility.

Tuner Genius Firmware Updates (version 1.1.16)

- Screen capturing implemented for service purposes (Ctrl+Alt+P)
- PTT indicator bug fixed (lightning up both A and B when transmitting)
- Improved FLEX integration
- Touchscreen activated / useable for TGXL 3-way models)
- Touchscreen calibration / automatic and via the API
- TGXL 3-way models can switch antennas via the touchscreen
- Fixed FLEX frequency rounding bug
- Fixed the FLEX interlock bug and improved relay switching timing
- Minor bug fixes

IMPORTANT: Screen Calibration is Required

After the upgrade from v1.1.8 to v1.1.16, TGXL will require a screen calibration by touching the three blue dots shown on the display.

For initiating a screen calibration manually, the user must hold the TUNE button while powering the device until the calibration display is shown.

Known Issues

There are no significant known issues with Tuner Genius v1.1.16

Tuner Genius Documentation Available on www.flexradio.com

The most current documentation and quick start guides for the Tuner Genius are available as a convenient download from the FlexRadio website

[Tuner Genius Documentation and Software](#)

Obtaining Technical Support

If you encounter any issues with your Tuner Genius, please use our online [Community](#) to search for information about SmartSDR and the FLEX-6000. If you need assistance using the Community, please refer to the [Community Message Board](#) for additional information.

If you are unable to find an existing answer to your issue via the Community, please contact FlexRadio Technical Support by opening a [HelpDesk support ticket](#) online.

For details on how to submit a HelpDesk support ticket, please refer to the HelpDesk article [How to Submit a Request for Technical Support](#).

Hours of Operation: Our Technical Support engineers are available Monday-Friday from 7:00 AM-4:00 PM Central Time. If you open a HelpDesk ticket after business hours, on a holiday, or weekend, we will respond to your request for assistance during regular business hours in the order your HelpDesk ticket was received.

Copyrights and Trademarks

© 2005-2023 FlexRadio. All rights reserved.

FlexRadio is a registered trademark of Bronze Bear Communications, Inc. DBA FlexRadio.

FLEX-6300, FLEX-6400, FLEX-6400M, FLEX-6600, FLEX-6600M, FLEX-6500, FLEX-6700, FLEX-6700R, Maestro, FlexControl, Power Genius XL, PGXL, Tuner Genius XL, TGXL, SmartSDR, SmartSDR for Windows, SmartSDR for iOS, SmartSDR for MacOS, SmartSDR CAT, SmartLink, DAX, TNF, WNB, multiFLEX, SmartControl, the SmartSDR "spectrum" (logo) and the FlexRadio Systems "wave" (logo) are trademarks of FlexRadio.

FlexRadio
4616 W. Howard Lane
Suite 1-150
Austin, TX USA 78728
+1 (512) 535-4713
www.flexradio.com